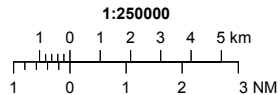


VISUAL APPROACH CHART - ICAO



AD ELEV 59 FEET

ELEV and ALT in ft
 HGT in ft above AD ELEV

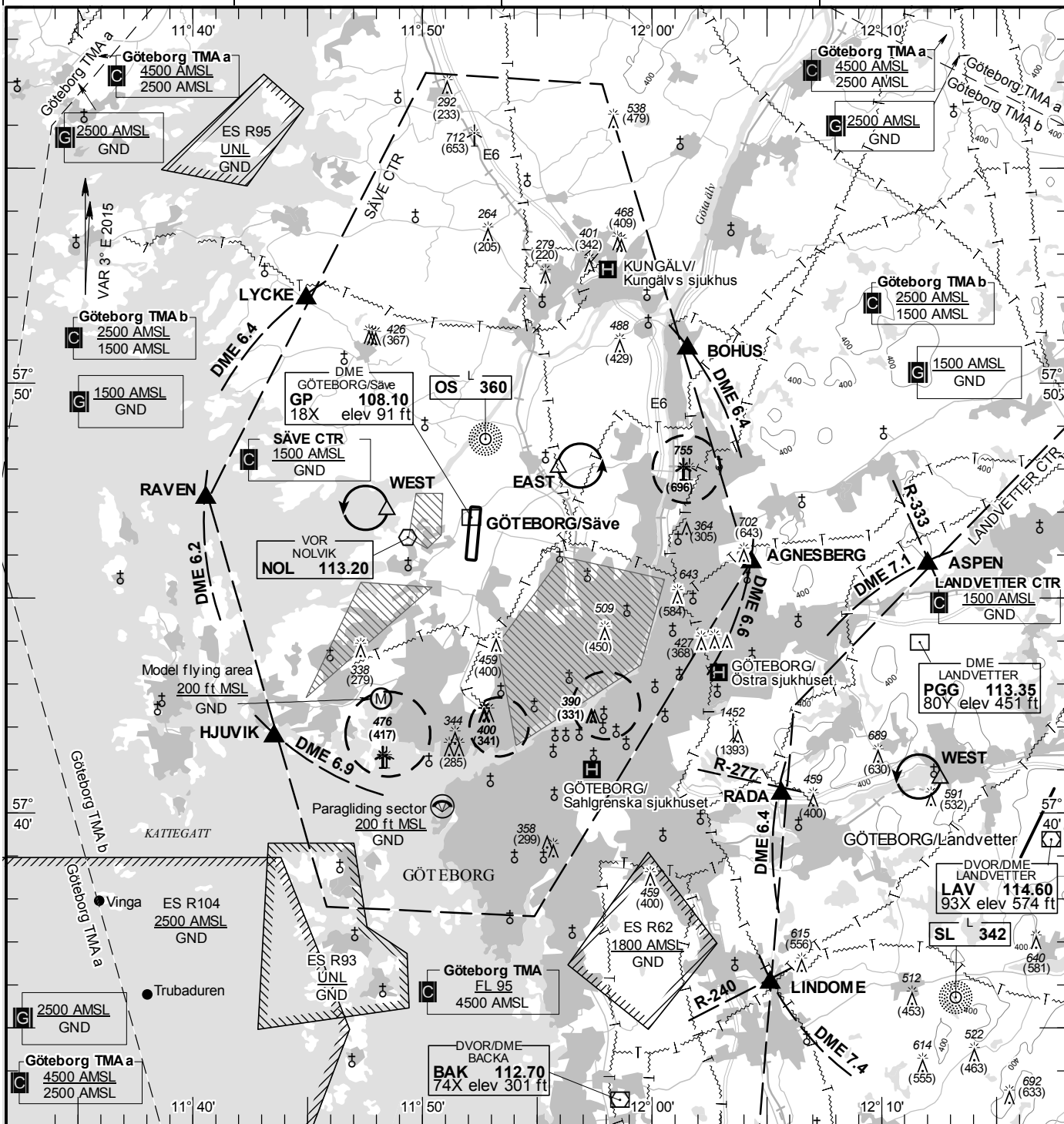
TA 5000 AMSL

SÄVE TOWER

119.050 131.850 129.100

AD 2 ESGP 6-1

**GÖTEBORG/Säve
 SWEDEN**



Communication failure

- SQUAWK 7600
- Enter CTR via AGNESBERG – Holding EAST or via RAVEN – Holding WEST at or below 1500 ft AMSL to traffic circuit. Transmit blind your intentions.
- Flash LDG-lights and watch TWR for optical signals.

Remark

Obstacle below 197 ft AGL not shown in CTR.
 Noise sensitive area, to be avoided

RWY NR	THR ELEV	PAPI (MEHT)
01	58 ft	Left/3.15° (51 ft)
19	48.1 ft	Left/3.00° (56 ft)

Legend
 See GEN 2.3

Entry / exit point

LYCKE	575157N 0114456E
BOHUS	575047N 0120132E
AGNESBERG	574549N 0120419E
HJUVIK	574146N 0114332E
RAVEN	574719N 0114034E

Holding

WEST: Hold west of Nolvik over the sea, west of point 574702N 0114826E
EAST: Hold over powerline west of road E6, east of point 574801N 0115556E